



Support for Learning
at JGHS



Overview of the Additional
Support Needs our pupils have



The 5 roles of SfL in Edinburgh

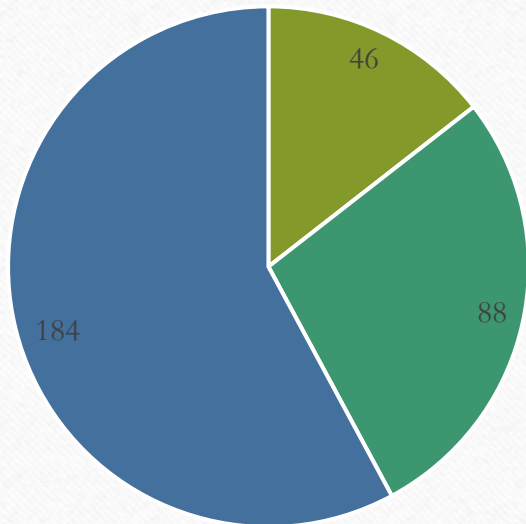


Any Questions?

Plan for the Day

Overview

Additional Support Needs



■ ADHD ■ ASD ■ Dyslexia ■

What is an Additional Support Need?

- Dyslexia
- Dyspraxia (DCD)
- ADHD/ADD
- Autistic Spectrum Disorder (ASD)
- Dyscalculia
- Hearing impairments
- Visual impairments
- Physical disabilities
- Mental health issues
- Young carers
- Care experienced pupils

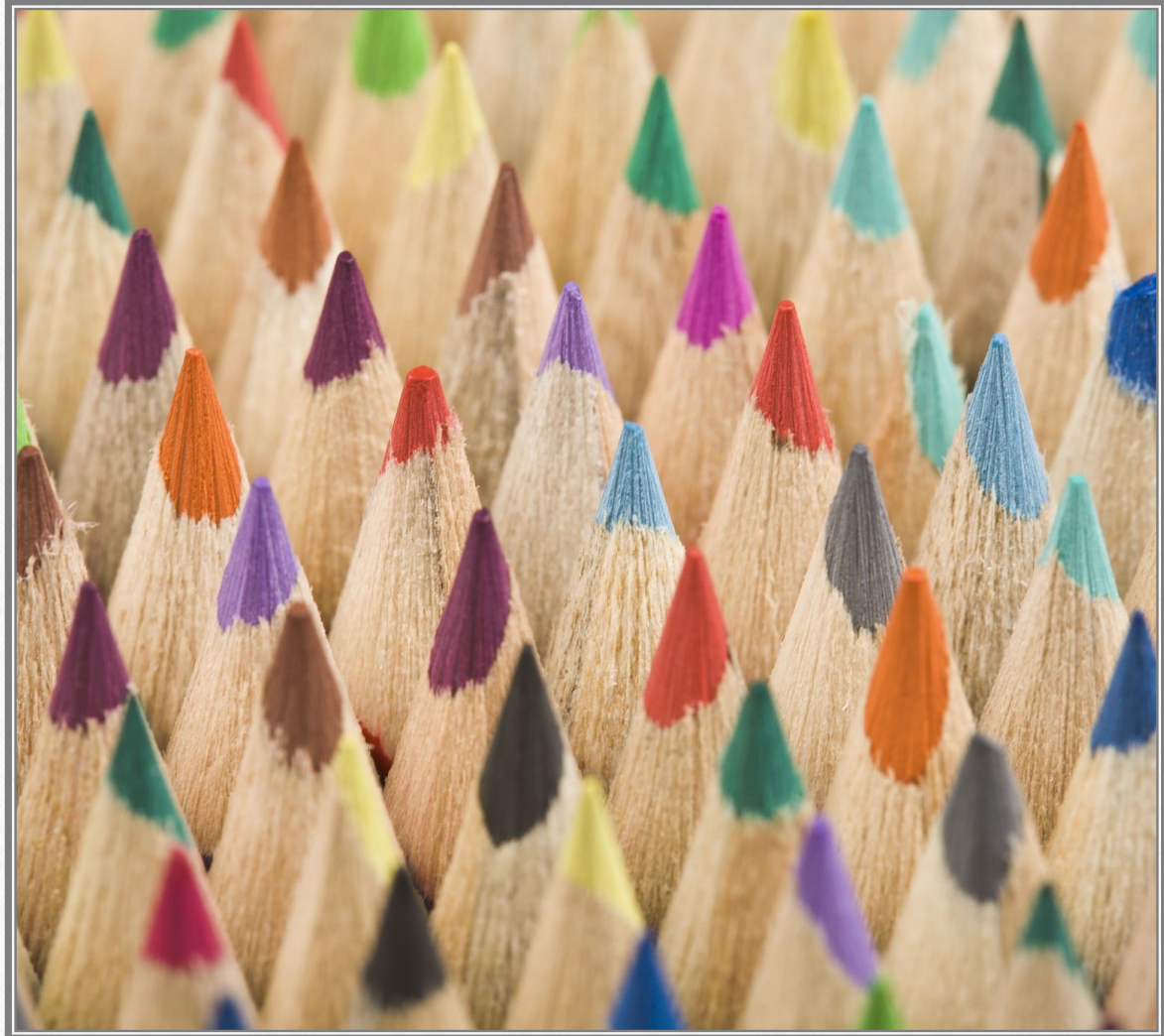
The SfL
Department

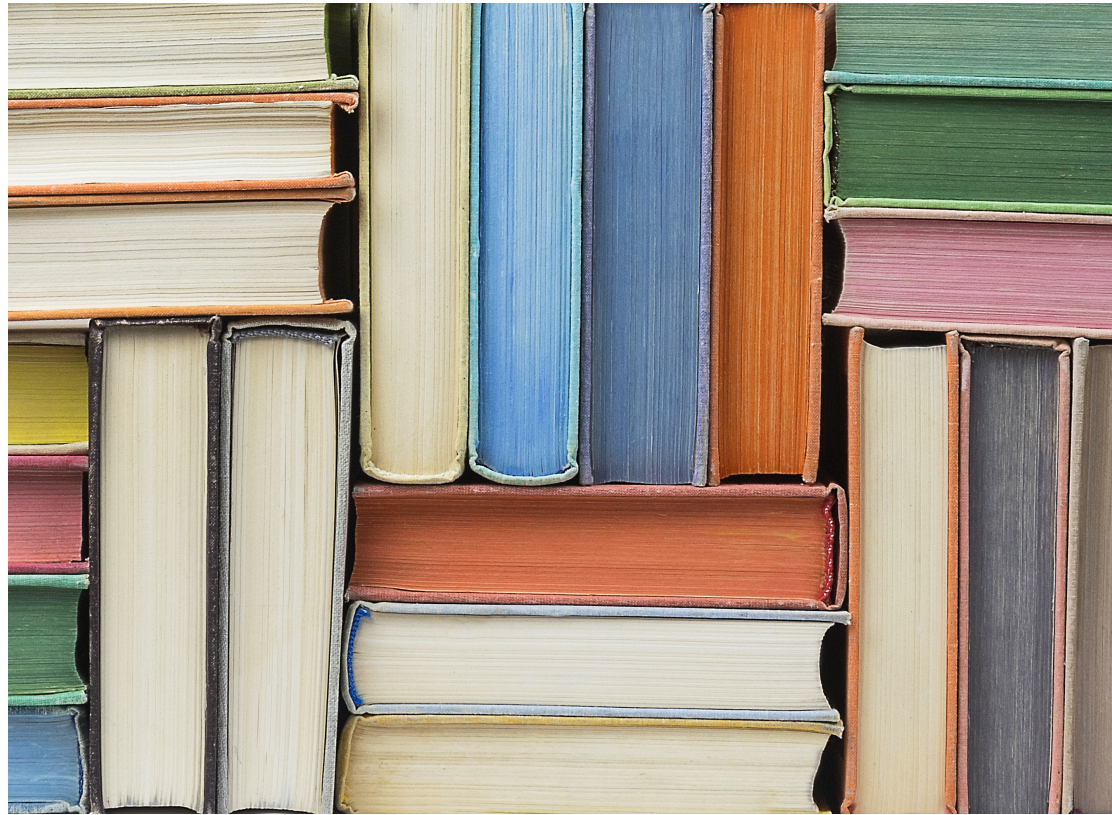
5 teachers – each
linked with a learning
community

Currently 7 part time
PSAs – plus 4
vacancies

The Five Roles of Support for Learning

1. Consultation
2. Cooperative teaching
3. Direct teaching
4. Liaising with specialist services
5. Staff/Pupil development





Consultation

- Transition
- Sharing Information
- Planning Meetings
- Sharing Successful Strategies
- Assessment Arrangements

Assessment Arrangements (AA)

- Pupils do not need an identified ASN, but staff need to have noticed an impact on their progression. The issue needs to be longstanding and should have been identified some time before the exams.
- Each subject needs to see what can help remove the disadvantage
- Each subject has to provide evidence of the positive impact of the AA.
- Schools are audited by the SQA every few years to ensure they stick to the SQA's strict policy guidelines. Our Ed Psych quality assures the process, checking our ASN information on the pupils we make requests for and the quality of teachers' evidence.

Cooperative Teaching

Support for Learning teachers
support in some mainstream classes –
most often Maths and English.



Liaising with Specialists

- Additional Support for Learning Service
- Educational Psychologist
- Occupational Therapy
- Speech and Language
- Skills Development Scotland
- Social Work
- Third Sector providers – Canongate Youth, Green Team, Barnardos, Light Up Learning, Enable etc

Staff Training



Three year rolling programme focusing on the most prevalent ASNs.



Increasingly need to consider training for all the school community – all pupils need to be aware of the ASNs of their peers.

Direct Teaching



S1 Reading
Groups



S2 Literacy
Groups



S3-6 Tutorial
Groups



Supported Duke
of Edinburgh



Nurture Groups
/ Fit 4 Life



Transition
Support Groups



Break and
Lunch Club



Homework Club

Any Questions?

